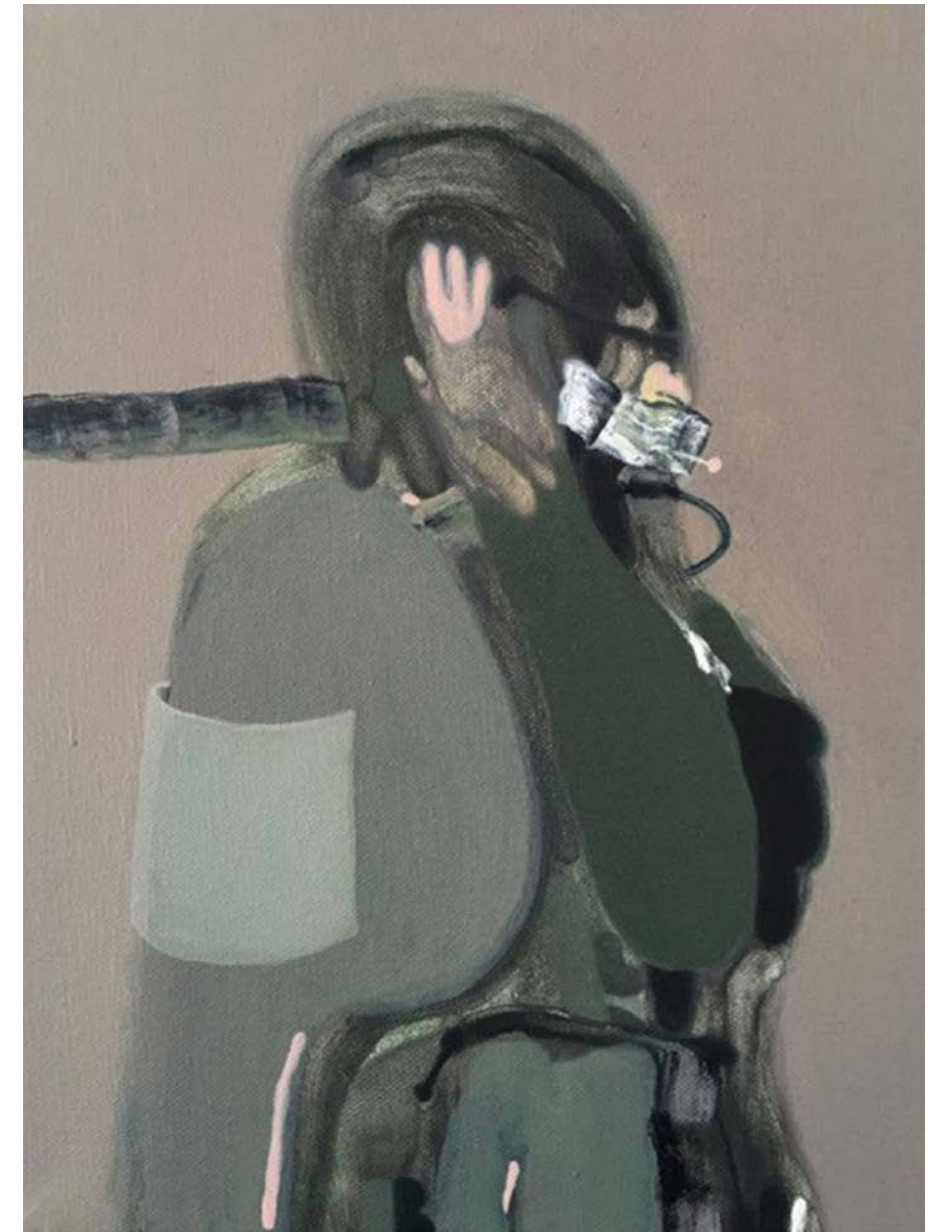




Mollino | Galliano | Castelli

“Mollino | Galliano | Castelli” is the inaugural show of No 20, the newest exciting art space opening in Islington. Located in one of the most thriving areas of London, No 20 is the result of a major refurbishment by collector Micky Johnson of a former 3000 sq ft frame factory set to become one of the main destinations for contemporary arts in North London.

For its inaugural show, No 20 invited Ncontemporay gallery to curate an exhibition featuring works by Carlo Mollino, Daniele Galliano and Guglielmo Castelli, three artists active in Turin, Italy, during the span of three generations, united by their common interest in depicting with their very personal techniques the human condition in the contemporary world.

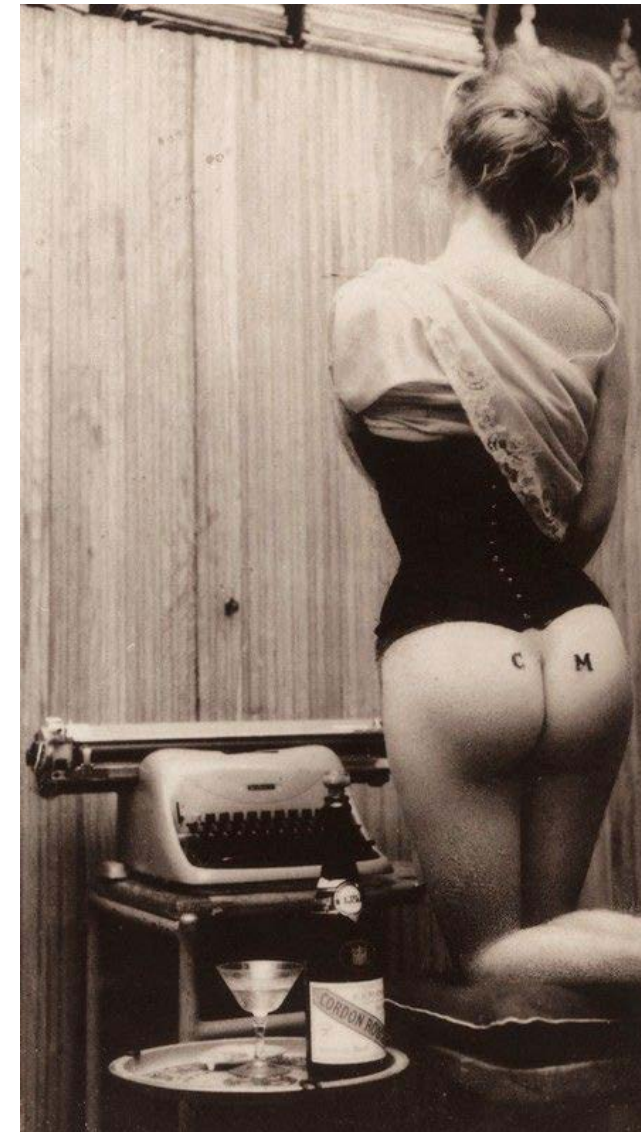




Carlo Mollino

(1905-1973) was one of the most famous architects, designers and artists of his generation. Known for his designs during his lifetime, his fame expanded further into photography after his death, when his collection of prints and polaroids was found. The rediscovery of Mollino's works has attracted recently the attention of a number of important galleries worldwide, including Gagosian Gallery in New York.

The works of Carlo Mollino are all courtesy of the Alinari Archive in Florence.



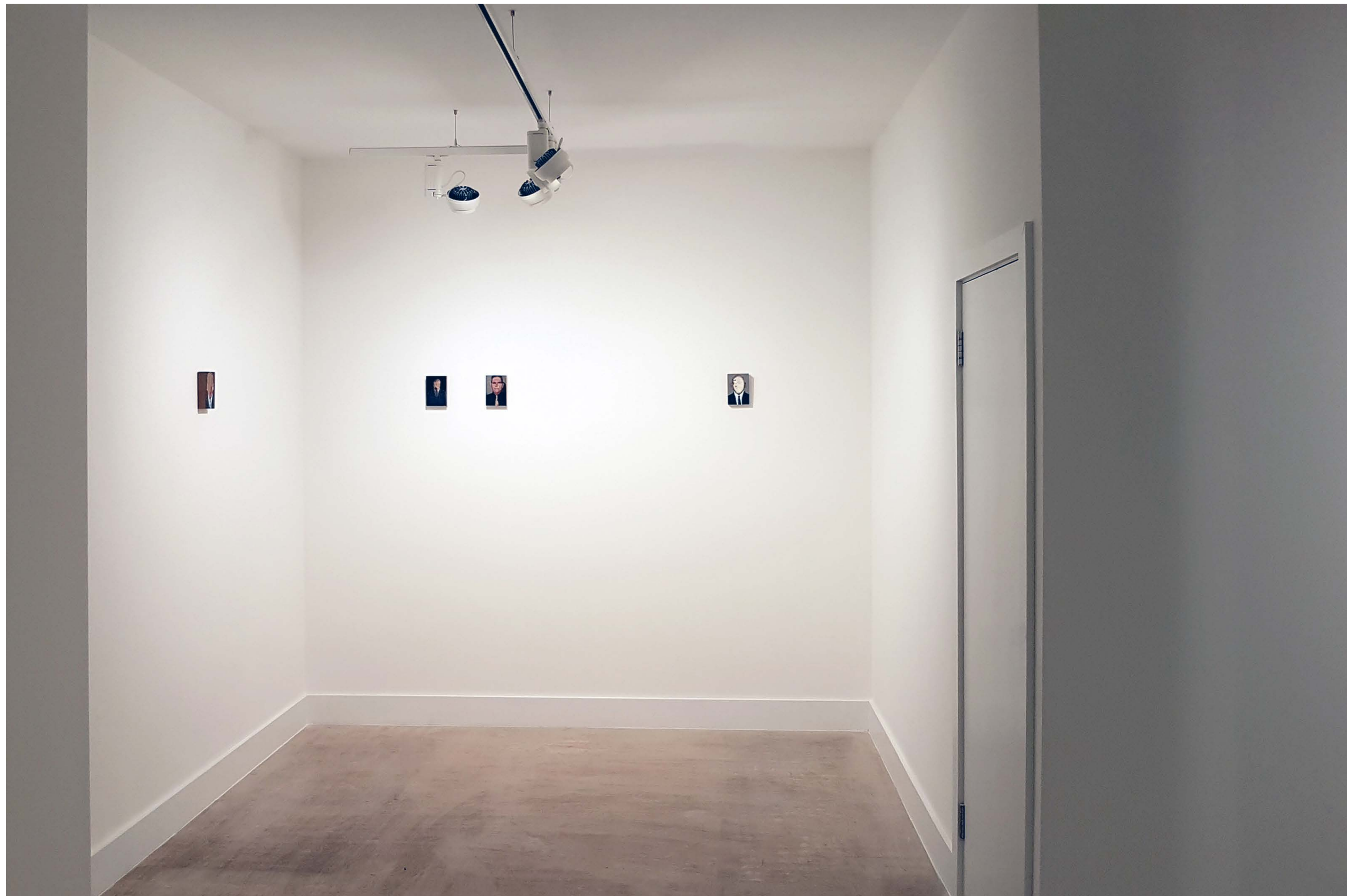




Daniele Galliano

(b.1961) is one of the most talented Italian figurative painters; he represented Italy at the Venice Biennale in 2009 and has been selected for the 2016/2017 Kochi Biennale in India. His works during the last two decades have focused on the contemporary condition of humans within the society.





Guglielmo Castelli

The youngest of this trio of artists, Guglielmo Castelli (b.1987) has attracted a lot of attention internationally during the last years for his technique and subjects. Named as one of the most influential artists under-30 by Forbes in 2016, Castelli started his career with a strong interest in fashion illustration only to develop a very personal technique to paint haunting images fading in front of the viewers' eyes.

